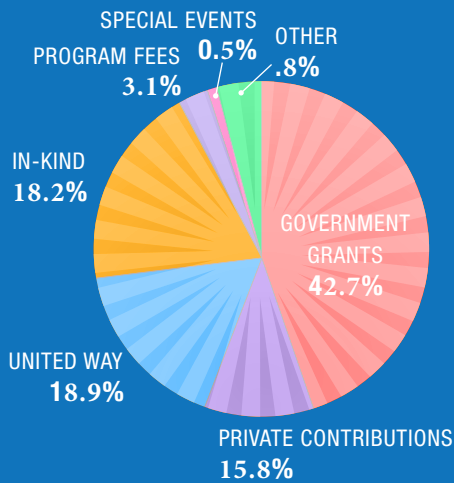


Silver Spring Neighborhood Center

FINANCIALS AS OF JUNE 30, 2017



REVENUES

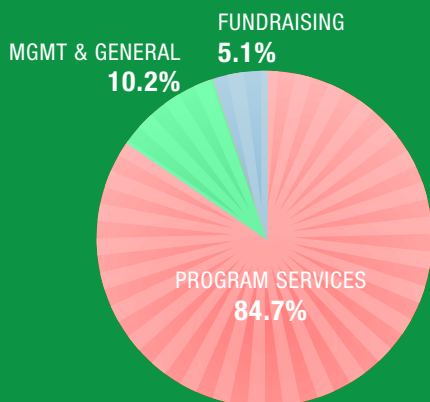
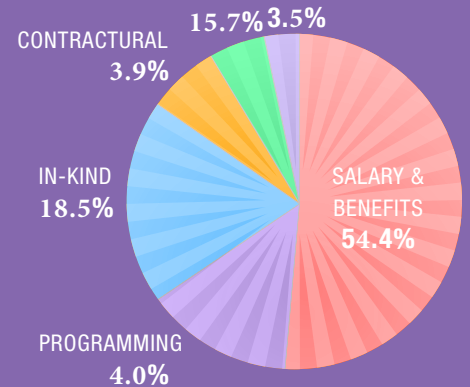
Government Grants	\$1,327,735	42.7%
Private Contributions and Grants	492,272	15.8%
United Way of Greater Milwaukee	589,296	18.9%
In-Kind Gifts	566,270	18.2%
Program Services Fees	95,934	3.1%
Special Events	14,082	.5%
Other Revenue	24,423	.8%
TOTAL REVENUE	\$3,110,012	100.0%

EXPENSES

Salaries & Benefits	\$1,665,393	54.4%
Program & Operating Expenses	123,837	4.0%
In-Kind Expenses	566,270	18.5%
Contractual/Professional Fees	118,760	3.9%
Occupancy/Equipment	479,361	15.7%
Non-Cash (depreciation)	106,361	3.5%
TOTAL EXPENSES	\$3,059,982	100.0%

PROFIT/(DEFICIT)	\$50,030
PROFIT/(DEFICIT) excl. non-cash items	\$156,391

OCCUPANCY/EQUIPMENT NON-CASH



PROGRAM, MANAGEMENT AND FUNDRAISING

Program Services	\$2,573,708	84.1%
Management & General	351,314	11.5%
Fundraising	134,960	4.4%
TOTAL	\$3,059,982	100.0%